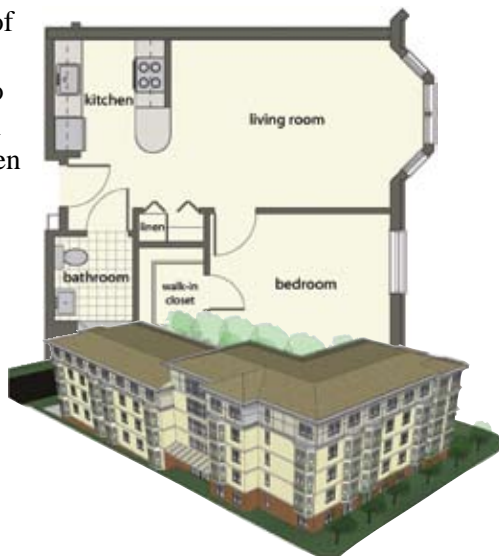




# Home for Good

## Funding Awarded for Hearth at Olmsted Green

Recently the Boston Department of Neighborhood Development and Boston Housing Authority joined forces to award Hearth 59 project-based section 8 vouchers for Hearth at Olmsted Green and \$1.75m in soft debt – a major step in the process to get the project underway. The vouchers will enable Hearth to provide the highest quality housing for homeless elders, regardless of income. With this crucial funding commitment in place, we have submitted our application for tax-credits which will provide funds to start development. Our lead design professional, The Architectural Team, is completing detailed design and bid documents, and we have high hopes that we can begin construction by next spring.



With Hearth at Olmsted Green we plan to capitalize on our nearly 20 years of experience and make this new residence the “model” Hearth home. As we continue to talk with other MA agencies about expanding Hearth around the state as well as promoting our model around the country, Hearth at Olmsted Green will stand as the best example of affordable, supportive, and permanent housing for formerly homeless and at-risk seniors.

Best of all, the 59 apartments will significantly increase our capacity to bring Boston’s homeless elders off the streets and into housing – bringing us that much closer to ending elder homelessness.

## Social Innovation: Hearth’s 2009 Annual Meeting



This year’s theme is Social Innovation in honor of the selection of Hearth’s Outreach Program as a 2009 Social Innovator by the Social Innovation Forum.

Our keynote speaker is Susan Musinsky, Executive Director of the Social Innovation Forum, a Root Cause initiative.

### EVENT DETAILS

**Wednesday, November 4th**

Meeting at 5:30pm

Cocktail Reception 6:00pm - 8:00pm

Hosted by Nixon Peabody  
100 Summer Street, Boston



Harvard Pilgrim Health Care is this year’s Distinguished Service Award recipient, in recognition of their innovative approach to corporate responsibility - through their employee volunteer program and their 9/11 Community Spirit Mini-Grant program. The outpouring of support from Harvard Pilgrim Health Care employees has been tremendous, and we are thrilled to honor them.

All are invited to attend. RSVP to Annie Garmey at [agarmey@hearth-home.org](mailto:agarmey@hearth-home.org) or 617-369-1555.

## Message from Mark

In July I attended the annual National Conference on Ending Homelessness in Washington D.C along with 1200 people from around the country. With countless news stories and reports highlighting the increase in homelessness during these tough economic times, the conference could have been depressing.



But it wasn’t, and I’d like to share some of the highlights

*Continued on page 3*

# “Give-Back Time”

## Artist Peter Phelps donates paintings to Hearth

This fall local artist Peter Phelps will be participating in the Jamaica Plain Open Studios. His art show will be hosted by Hearth at our Burroughs Street residence, and all proceeds will benefit our mission to end elder homelessness.



Peter has been donating paintings to Hearth for over a year. It's his way of thanking us for helping him find a home, after his successful battle with cancer left him homeless in Boston.

“It's give-back time,” Peter says when anyone asks him why he's donating all his art. “Hearth gave to me and I give back.”

His creativity has thrived since moving into his new apartment in late 2007; he's created well over 100 works of art and donated most of them to Hearth.

Last fall we raised over \$6,000 at

the South End Open Studios. This past March Peter's paintings raised an additional \$1,300 while his work was on display at the Diesel Café in Somerville.

The show on September 26 & 27 will be the last one for Hearth; it's time for Peter to “give back” to the other people and organizations who've helped him.

You can see samples of Peter's newest works of art at [www.hearth-home.org/phelps.html](http://www.hearth-home.org/phelps.html).

*Top to Bottom: Stormy Flower, Happily Abstract, A Cat Apart*



Peter Phelps

2008 Mike Adaskaveg and The Boston Herald

# St. Peter's Youth Group Befriends Ruggles

On Sunday, May 17th the Middle School Youth Group from St. Peter's Church in Weston came to Ruggles Assisted Living Community in Roxbury and presented the residents with a Nintendo Wii Gaming System. This was the culmination of a project started back in January. The middle schoolers met the residents and toured the site. Then they created a plan for a gift the residents could all use and share.



John shows Lucille how to use the Nintendo controller for bowling.

The Nintendo Wii was perfect, they decided, because not only was it a totally new form of entertainment for the residents, but it also gave even the frailer



The youth group and their adult friends (from left to right): Mary Pughe, Peggy Batchelder, Teddy Batchelder, John McDaniel, Danielle Husley, Gabriella Ardila, Emily Phaneuf, Margaret Randle, Matt Jacobs, Polly Dickson, Joan Parrish; back row: Hall Kirkham)

residents an opportunity for physical activity.

The kids made a second trip to Ruggles to introduce the idea and the gaming system to the residents. They raised the money with the help of the

St. Peter's Outreach Committee and purchased everything they needed.

The Middle Schoolers patiently taught the residents how to use the wireless controllers and navigate through the game. Bowling has been the most popular of the virtual sports games available and is now part of the regular schedule of activities at Ruggles.

St. Peter's has had a long relationship with Ruggles that this new generation of parishioners is helping to revitalize. The youth group has brought much joy to the residents. St.

Peter's Church hopes to continue and build upon this relationship which provides wonderful fruit to both St. Peter's and to the folks at Ruggles.

# Remembering Bob Wright



Bob with friend Chris Nordstrom

Ruggles resident Bob Wright passed away on August 16, 2009. He had spent over a decade on the streets before friends Christina Nordstrom and Jonathan Margolis helped find him a home at Hearth. Bob was always willing to share his story in order to help bring attention to the problem of homelessness. The following are excerpts from song lyrics that Chris wrote shortly after meeting Bob. She read them at his memorial service.

## Summer Food Drive a Great Success

Board of Visitors member Param Roychoudhury first heard about Hearth at an informational breakfast for young professionals hosted by her employer, BNY Mellon. She embraced Hearth's mission and decided to do a collection drive for the Outreach Program Food Pantry.

Param organized a drive at BNY Mellon, her children's summer camp program at Pre-School Experience in Newton, and in her own neighborhood.

Her colleagues generously donated \$2,800 worth of food, gift cards and direct cash donations, and BNY Mellon has generously matched that with a gift of \$2,800. In all nearly \$8,000 worth of food and donations was raised. Hearth is extremely grateful to Param and her family, BNY Mellon, and all those who supported this outstanding effort.

## From "Angel with Attitude"

by Chris Nordstrom

He sat outside the church at Park Street  
right near the Park Street "T."  
He'd set up shop  
like he does most days,  
but, of concern to see,  
another sign placed next to him  
said, "Homeless by Fire."  
I handed him the quarters,  
he said, "Thank you, Ma'am," and  
smiled....

Maybe I'll see him tomorrow.  
I wonder what he'll have to say.  
Will he smile  
and tell the same old joke,  
or will he find another way  
to live and keep on seeking  
his winter heart's desire?  
Perhaps, that's as an angel  
there beneath the Park Street spire....

*You can read more about Bob in the book "Park Street Angel" written by Chris and published earlier this year. A portion of the proceeds from book sales benefits Hearth.*

## Bob Wright Memorial Fund

This fund was established in memory of Bob Wright and his commitment to supporting the elder homeless community. These funds will be used to support the Hearth Outreach Program to help homeless elders find permanent housing and supportive services, with a particular interest in helping elders with funds for emergency needs to ensure their well being.

*Checks should be made payable to Hearth, with "BWMF" on the memo line.*

## Message from Mark

*Continued from page 1*

with you that have rejuvenated me to fight even harder to end elder homelessness.

In an inspiring keynote address, the new Secretary of the U.S. Department of Housing and Urban Development, Shaun Donovan, spoke passionately about the administration's commitment to ending homelessness. He clearly understands the need for more supportive housing, including flexible funding for the services needed to ensure the stability of permanent housing. Donovan announced new funds dedicated to homelessness prevention and rapid re-housing.

In addition, the presentation I made on Hearth's unique approach

to ending elder homelessness was well attended. I met people who represented organizations from around the country – and even Newfoundland, Canada – who are recognizing the burgeoning crisis of elder homelessness in their communities, and they are looking to Hearth for guidance.

So with faith renewed, I am looking forward to working with all of you this fall and beyond to continue Hearth's work.

And finally, I once again want to thank all of our supporters, friends, partners and collaborators – you are the key to our future as you have been the source of our strength and success in the past!

Mark



Non-Profit Org.  
U.S. Postage  
PAID  
Boston, MA  
Permit #52869

# HEARTH

1640 Washington Street  
Boston, MA 02118

**Save the Date!**

**2009 Annual Meeting**  
**November 4, 2009**  
**5:30pm - 8:00pm**

See Page 1 for Details

## Mission Statement

Hearth is a non-profit organization dedicated to the elimination of homelessness among the elderly. This mission is accomplished through a unique blend of prevention, placement and housing programs, all designed to help elders find and succeed in homes of their own. To this end, all housing operated by Hearth provides a creative array of supportive services that assist residents to age with dignity, regardless of their special medical, mental health, or social needs. Hearth believes these goals are best accomplished through respect for staff and elders, with the desire to see both achieve their highest degree of potential.

## Board of Directors

*Officers*  
Mary S. Parker, *Chair*  
Kevin McCall, *Vice Chair*  
Ellen Feingold, *Treasurer*  
Myrna Putziger, *Clerk*  
Pamela Jones-Sampson,  
*Assistant Clerk*

*President and CEO*  
Mark Hinderlie

*Members*  
Alan Abrams, M.D.  
Greg Ansin  
Robert Bickford  
Anna M. Bissonnette  
Rebecca Brown, M.D.  
Jennifer D. Carey  
Susan M. Forti  
Glenn Frank  
Bob Halloran  
Gene Miller  
Rebecca Ridley Nazareth  
Karyn Scheier  
Irma M. Schretter  
Robert Wadsworth  
Judith Waterston

## Board of Visitors

Pamela Anderson	Chobee Hoy	Mamadou Ndiaye
Frank Badger	Sue Kaufman	Michael Neel
Aristotle Bakalos	Suzanne Kenney	Ellen Nolan Gard
Frank Capezera	Donna Kent	Christina Nordstrom
Varun Chopra	Jeff Kessner	Carmen Panacopoulos
Hannah Cohen	Melissa Kiley	Ann Raider
Kim Comart	Brenda King	Erica Raine
Julie Connelly	Joyce King	Deidre Robinson
Jennifer Coplon	Gary Lamson	Linda Roemer
Lisa Davis	Melanie L'Esperance	Param Roychoudhury
Sheila Devine	Carol Lobron	Erin Russ
Caroline Fisher	Gregory Manousos	Ruth Schwartz
Robert Frank	Martha McCall	Johanna Smith
Maria Freddura	Judith McDonough	Adam Subber
Paul Freddura	Susie McMillan	Bruce Taylor
Diana Garmey	Marilyn Miller	Shirley Thorne
Edward Garmey	Doug Mohns, Sr.	Sara Tribe
Wendy Grew	Tabor Mohns	Jim Wayman
Bob Houlihan	Judi Mullen	Gretchen Woodruff

**Join Hearth's email list to receive periodic updates and information about upcoming events and volunteer opportunities. Sign up at [www.hearth-home.org](http://www.hearth-home.org)**